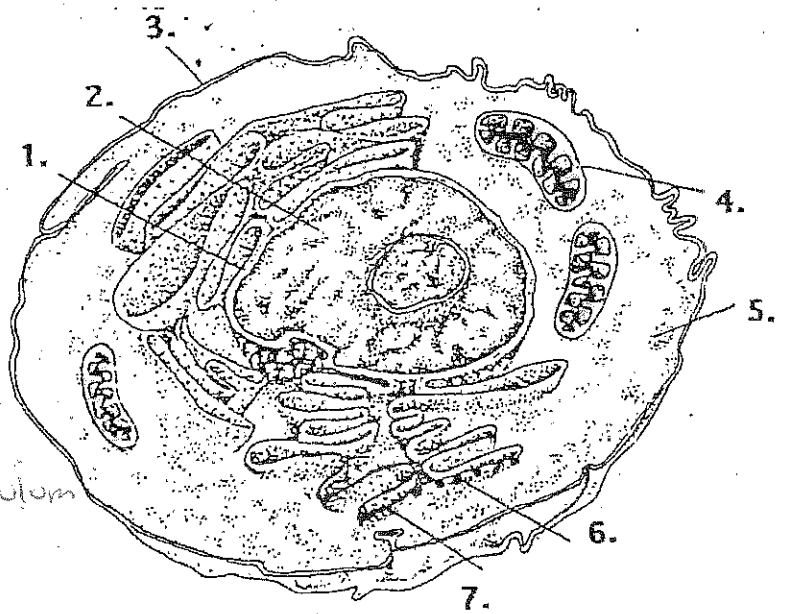


PLANT & ANIMAL CELLS

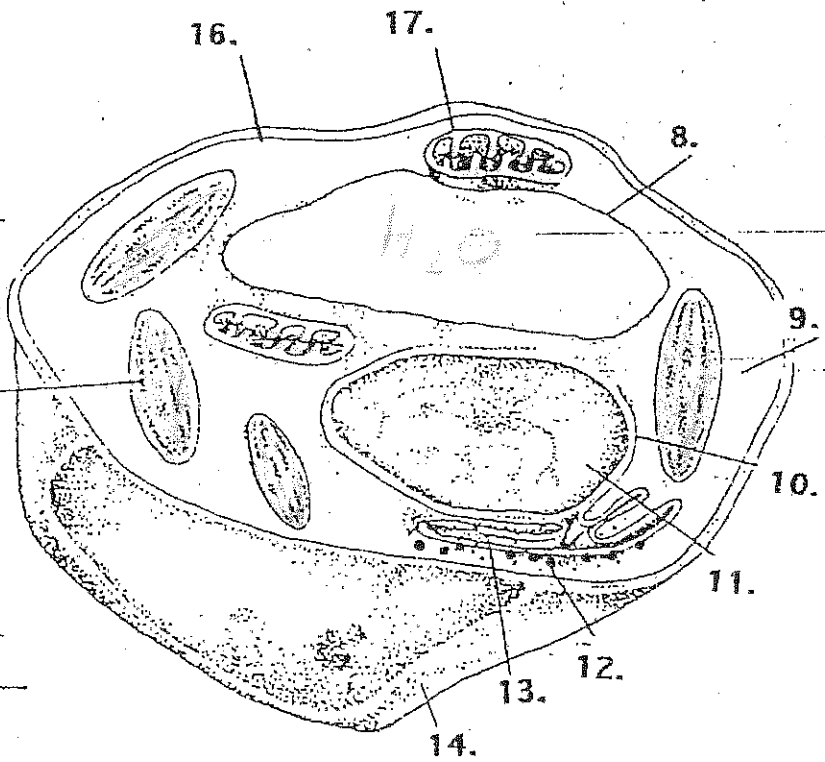
Animal cell

- 1. nuclear membrane
- 2. nucleus
- 3. cell membrane
- 4. mitochondria
- 5. cytoplasm
- 6. ribosomes
- 7. endoplasmic reticulum (er)



Plant Cell

- 8. vacuole
- 9. cytoplasm
- 10. nuclear membrane
- 11. nucleus
- 12. ribosomes
- 13. ER
- 14. cell wall
- 15. chloroplast
- 16. cell membrane
- 17. mitochondria



- color mitochondria RED
 chloroplast GREEN
 vacuole Light Blue